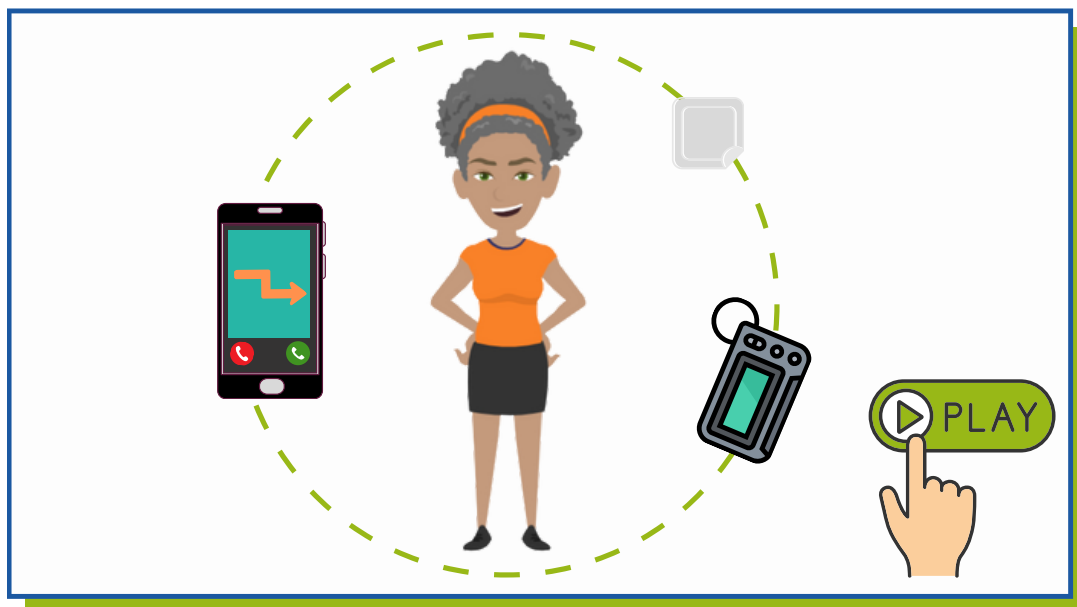




HYBRID CLOSED-LOOP (HCL) THERAPY



AIM:

This topic is an **introduction to Hybrid Closed-Loop (HCL) therapy**, the **different types of HCL systems available** and **their use in people living with type 1 diabetes**.

Depending on selected CDEP level, it focuses on:

- ✓ *Be aware of hybrid closed-loop (HCL) therapy and its use in type 1 diabetes*
- ✓ *Be aware of the basic principles and terminology used in HCL therapy*
- ✓ *Be able to give basic advice to someone using an HCL system*
- ✓ *Identify when HCL therapy should be used with caution or discontinued, and be able to troubleshoot issues.*

DURATION:

 This topic will take roughly **30–90 minutes to complete**

The completed topic will generate :

- a certificate
- reflection form for revalidation and appraisals
- CDEP rewards!



Start the Hybrid Closed-Loop (HCL) Therapy topic today!

- **Sign in to CDEP or**
- **See if the topic has been added to your Trust's training portal**



For more information, pls email us on info@cdep.org.uk

